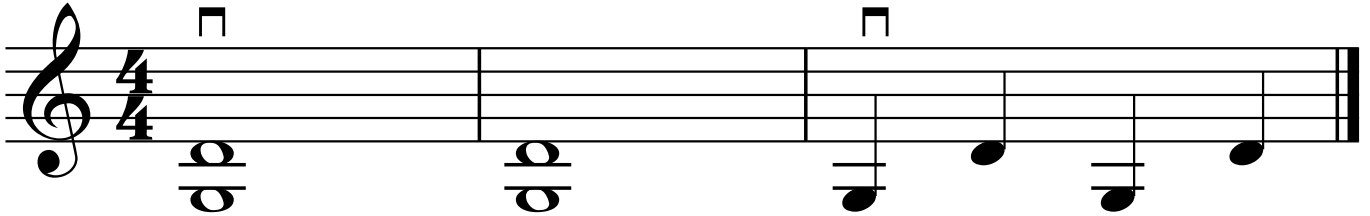


Double-Stop G/D-String Position

When playing a song that rapidly moves between the G- and D-strings, adjust your bow-arm level as if you were playing the G/D double-stop. Use your wrist to move the bow back and forth between strings.



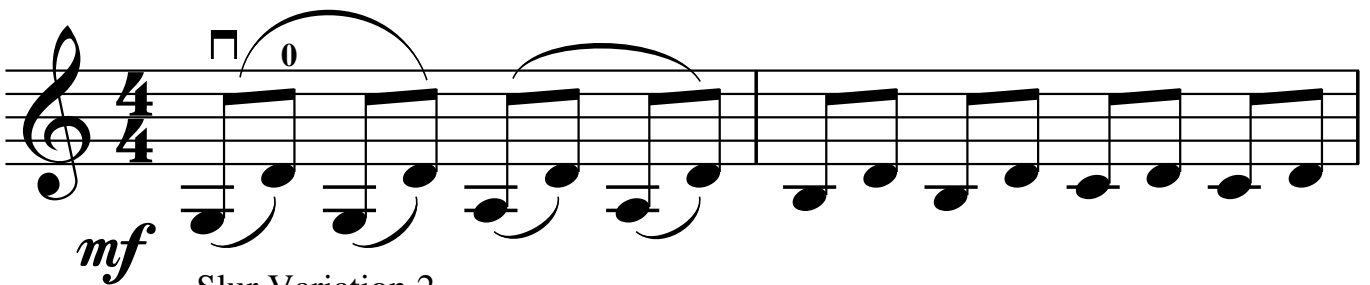
Twisted Tonic -Kristina Arellano

The *tonic* is the first degree number in a scale.

What note is tonic in the G Major scale? _____

How many tonics can you find in this song? _____

Slur Variation 1



Slur Variation 2

